

U.S. Army Public Health Center

# Army Influenza Activity Report

Week ending 02 January 2021 (week 53)

## Influenza Vaccination Coverage\*

As of 7 January 2021

81%	Army Active Duty
71%	Army Guard
81%	Army Reserve

\*Data Source: MEDPROS

Click to enlarge images.

## SUMMARY

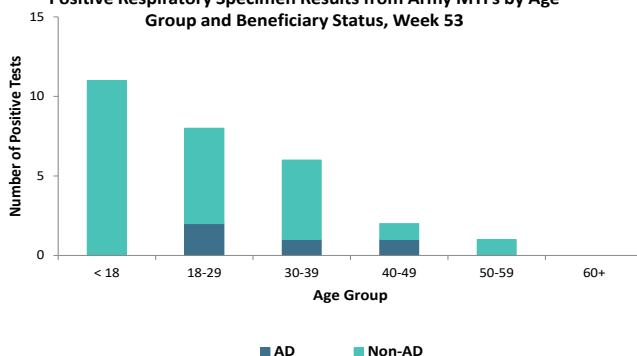
The proportion of positive influenza A specimens for the Army in week 53 is 0.1%; all positive influenza A specimens were reported from Regional Health Command - Central. No hospitalizations were reported in week 53; the season total thus far is three compared to 62 influenza-related hospitalizations reported as of this time last season. Of the total positive respiratory specimens (n=24), 13% (n=3) were influenza B and 8% (n=2) were influenza A specimens. Nationwide, influenza activity is low with 0.1% of specimens tested by clinical laboratories being positive for influenza.

## GEOGRAPHIC SPREAD

Data on the geographical spread of influenza is unavailable this season due to the COVID-19 pandemic. For information from previous seasons and additional information about nationwide influenza surveillance, please visit the Centers for Disease Control and Prevention's website by clicking [here](#).

## DEMOGRAPHICS

Positive Respiratory Specimen Results from Army MTFs by Age Group and Beneficiary Status, Week 53

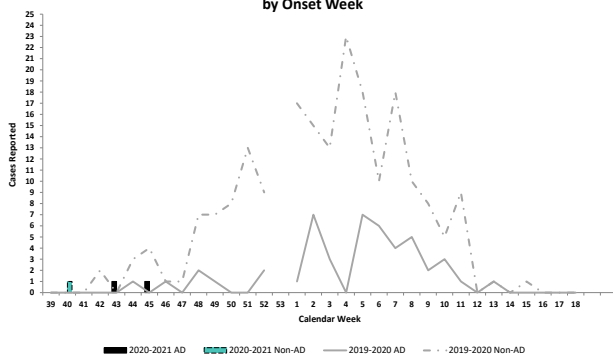


**AD:** Four positive respiratory specimens were collected from active duty (AD) Service members in week 53; they were collected from individuals in the 18-29 (n=2), 30-39 (n=1), and 40-49 (n=1) age groups.

**Non-AD:** Twenty positive respiratory specimens were collected from non-AD individuals; 55% (n=11) were from those under 18 years of age.

## INFLUENZA-ASSOCIATED HOSPITALIZATIONS

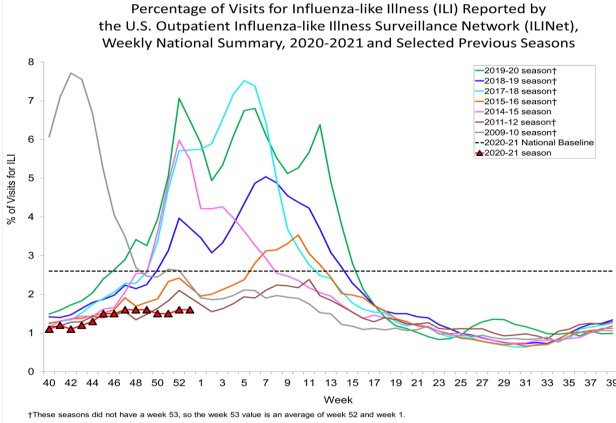
Army Influenza-Associated Hospitalizations Reported in DRSi by Onset Week



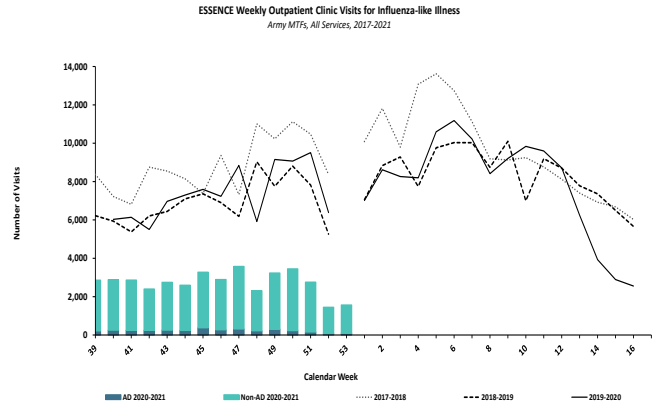
No influenza-associated hospitalizations were reported to the Disease Reporting System internet (DRSi) in week 53; three hospitalizations have been reported for the entire season thus far. During the 2019-2020 season, 62 hospitalizations were reported from the start of the season through week 53.

\*DRSi does not capture cases older than 65 years old for influenza-associated hospitalizations.

## ILI ACTIVITY - UNITED STATES

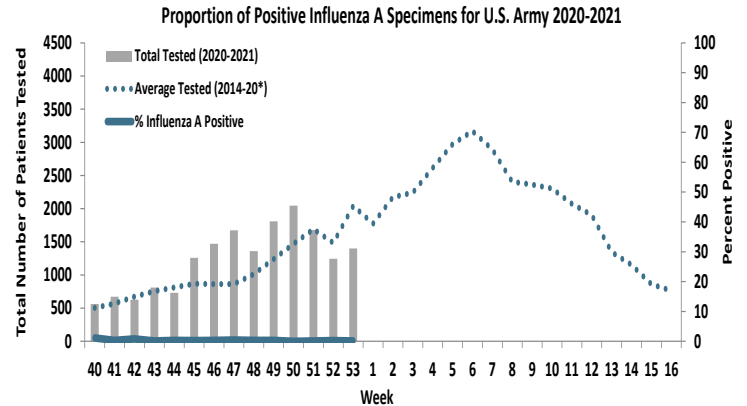
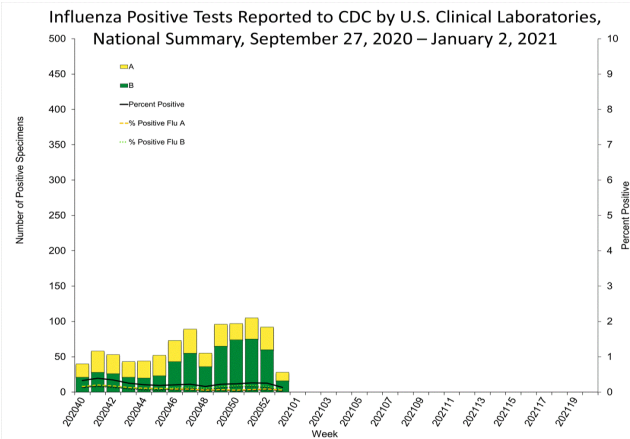


## ILI ACTIVITY - ARMY



Nationwide in week 53, incident ILI activity was 1.6%; this is below the national baseline of 2.6%. At Army medical treatment facilities, incident ILI activity increased by 8% from week 52 to week 53. The majority of ILI encounters (94%) were from non-AD patients in week 53.

## LABORATORY RESPIRATORY SPECIMEN TESTING



Nationwide during week 53, a total of 21,013 specimens were tested for influenza by clinical laboratories and submitted to CDC, of which 28 (0.1%) were positive; influenza A accounted for 42.9% of the total positive specimens. In the Army population, 0.1% of 1,398 specimens tested for influenza A were positive in week 53.

		Week 50	Week 51	Week 52	Week 53	Season Total
Army MTF Laboratory Results, 2020-21	Influenza A	1	2	2	2	51
	Influenza B	4	3	2	3	56
	Adenovirus	1	8	5	1	50
	Enterovirus	21	28	11	18	180
	Parainfluenza	0	2	0	0	7
	RSV	0	4	2	0	29
	Negative	4,664	3,612	2,773	3,132	42,210
	<b>Total</b>	<b>4,691</b>	<b>3,659</b>	<b>2,795</b>	<b>3,156</b>	<b>42,583</b>

Of the 3,156 specimens tested in week 53, less than 1% (n=24) were positive for any type of respiratory illness. Rhinovirus/enterovirus accounted for 75% (n=18) of positive specimens, adenovirus (n=1) for 4%, influenza B for 12.5% (n=3), and influenza A for 8% (n=2).

Additionally, the reported number of specimens tested increased by 12% since week 52 (n=2,795).

**Locations providing week 53 laboratory data as of 6 January 2021:** Ft Belvoir, Ft Benning, Ft Bliss, Ft Bragg, Ft Campbell, Ft Carson, Ft Drum, Ft Gordon, Ft Hood, Ft Huachuca, Ft Irwin, Ft Jackson, Ft Knox, Ft Leavenworth, Ft. Leonard Wood, Ft Lewis, Ft Polk, Ft Riley, Ft Rucker, Ft Sill, Ft Stewart, Ft Wainwright, Korea, Landstuhl Regional Medical Center, Redstone Arsenal, Tripler Army Medical Center, the U.S. Military Academy, and Walter Reed National Military Medical Center.

## LABORATORY RESPIRATORY SPECIMEN TESTING DURING WEEK 53

Region	Installation	Influenza A		Influenza B		Adenovirus	
		% Positive	Baseline % Positive	% Positive	Baseline % Positive	% Positive	Baseline % Positive
RHCA	Ft. Belvoir	0	24.8	0			100
	Ft. Benning	0	23.2	0	2.4		
	Ft. Bragg	0	16.5	0			
	Ft. Campbell	0	25.8	12.5	1.1		100
	Ft. Drum	0	0	0			
	Ft. Gordon	0	17	0	2.9	100	100
	Ft. Jackson	0	22.7	0	1.3		
	Ft. Knox	0		0			
	Ft. Rucker	0	27.3	0	7.1		
	Ft. Stewart	0	10.8	0	3.6		100
Redstone Arsenal	0	0	10	0			
U.S. Military Academy	0	33.3	0				
RHCC	Ft. Bliss	0	0	0			
	Ft. Carson	5.7	24				
	Ft. Hood	0	40.8	0	0.7	0	
	Ft. Huachuca	0	28.6	0	16.7		
	Ft. Irwin	0		0			
	Ft. Leonard Wood	0	29.7	0	1.5		
	Ft. Polk	0	20.3	0	100		
	Ft. Riley	0	23.1	0	0		
	Ft. Sam Houston	0	20.3	0	3.2		100
Ft. Sill	0	20.6	0	100			
RHCE	Landstuhl Regional Medical Center	0	20.7	0	0	0	5.3
RHCP	Ft. Wainwright	0	0	0	0		
	Korea	0	27.3	0	0		14.3
	Tripler Army Medical Center	0	14.3	0		0	

Region	Installation	Enterovirus		Parainfluenza		Respiratory Syncytial Virus	
		% Positive	Baseline % Pos.	% Positive	Baseline % Pos.	% Positive	Baseline % Pos.
RHCA	Ft. Belvoir				100	0	25.9
	Ft. Gordon				100	0	100
	Ft. Stewart					0	0
RHCC	Ft. Bliss					0	
	Ft. Carson					0	8
	Ft. Hood	20		0		0	28.6
	Ft. Polk					0	63.6
	Ft. Riley					0	0
	Ft. Sam Houston				100	0	100
	Ft. Sill					0	41.7
RHCE	Landstuhl Regional Medical Center			0	2.6	0	17.4
RHCP	Ft. Wainwright					0	22.2
	Tripler Army Medical Center	35.7		0	100		100

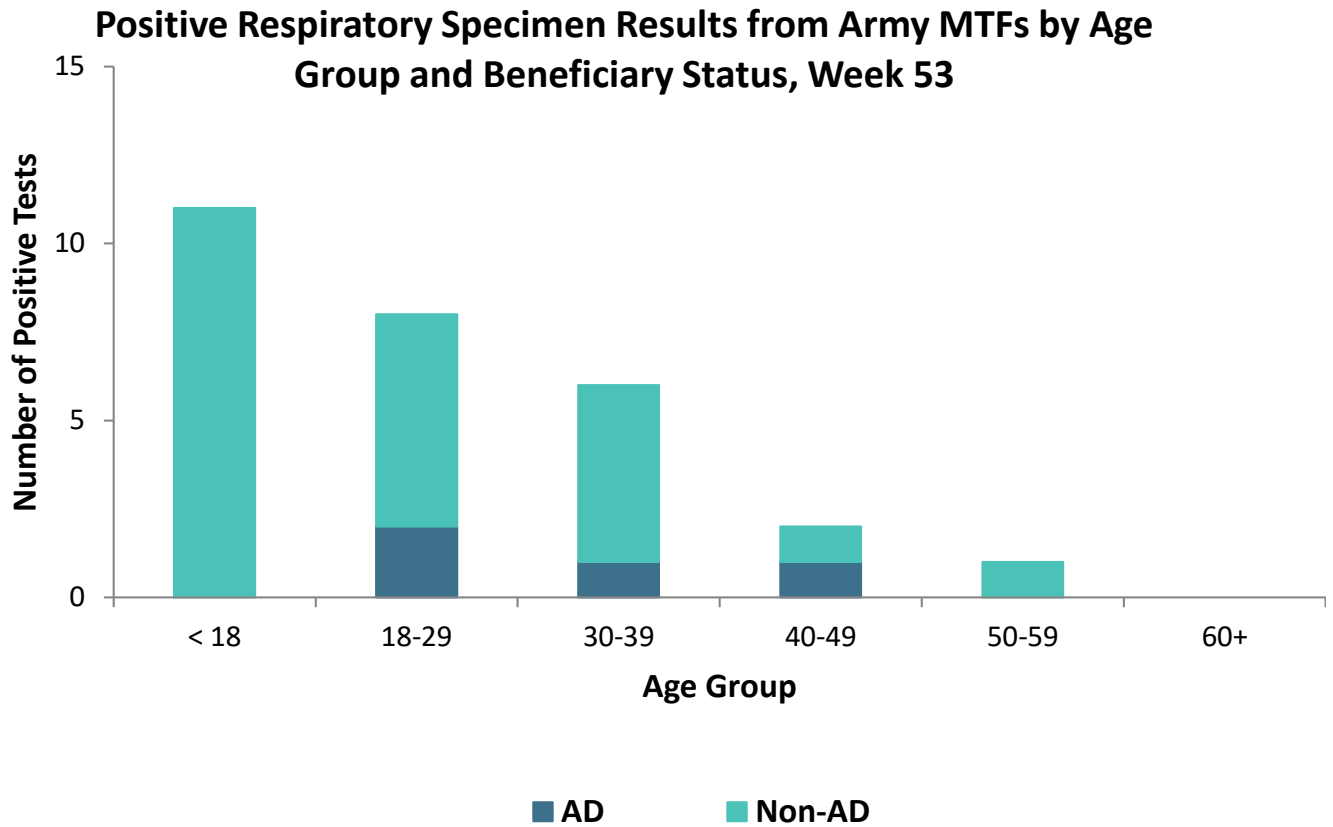
No. Tested: Number of specimens tested during MMWR week 53 2020/2021 season.

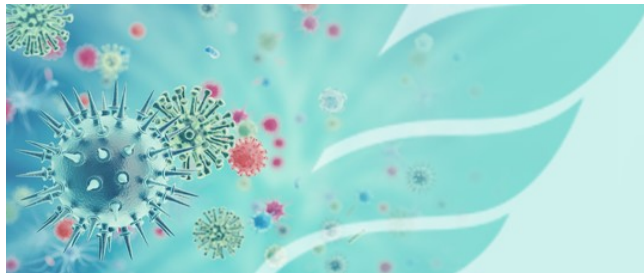
% Positive: Percentage of positive specimens reported during MMWR week 53, 2020/2021 season.

Baseline % Pos.: Percentage of positive specimens reported in MMWR week 53 during influenza seasons from September 2012 - May 2020.

Missing values indicate that specimens were not tested for the disease during the week of interest.





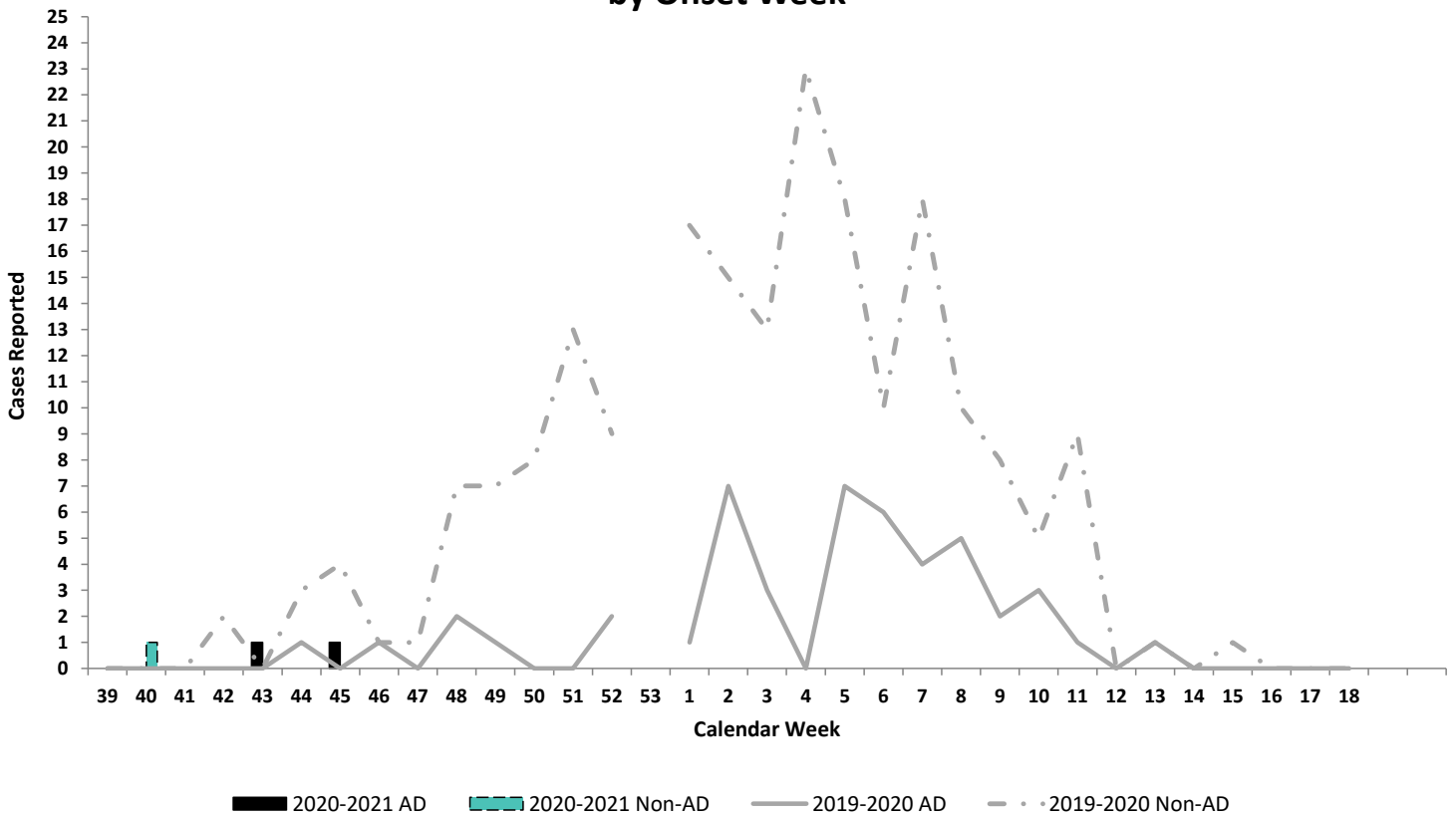


U.S. Army Public Health Center

# Army Influenza Activity Report

Week ending 02 January 2021 (week 53)

## Army Influenza-Associated Hospitalizations Reported in DRSi by Onset Week



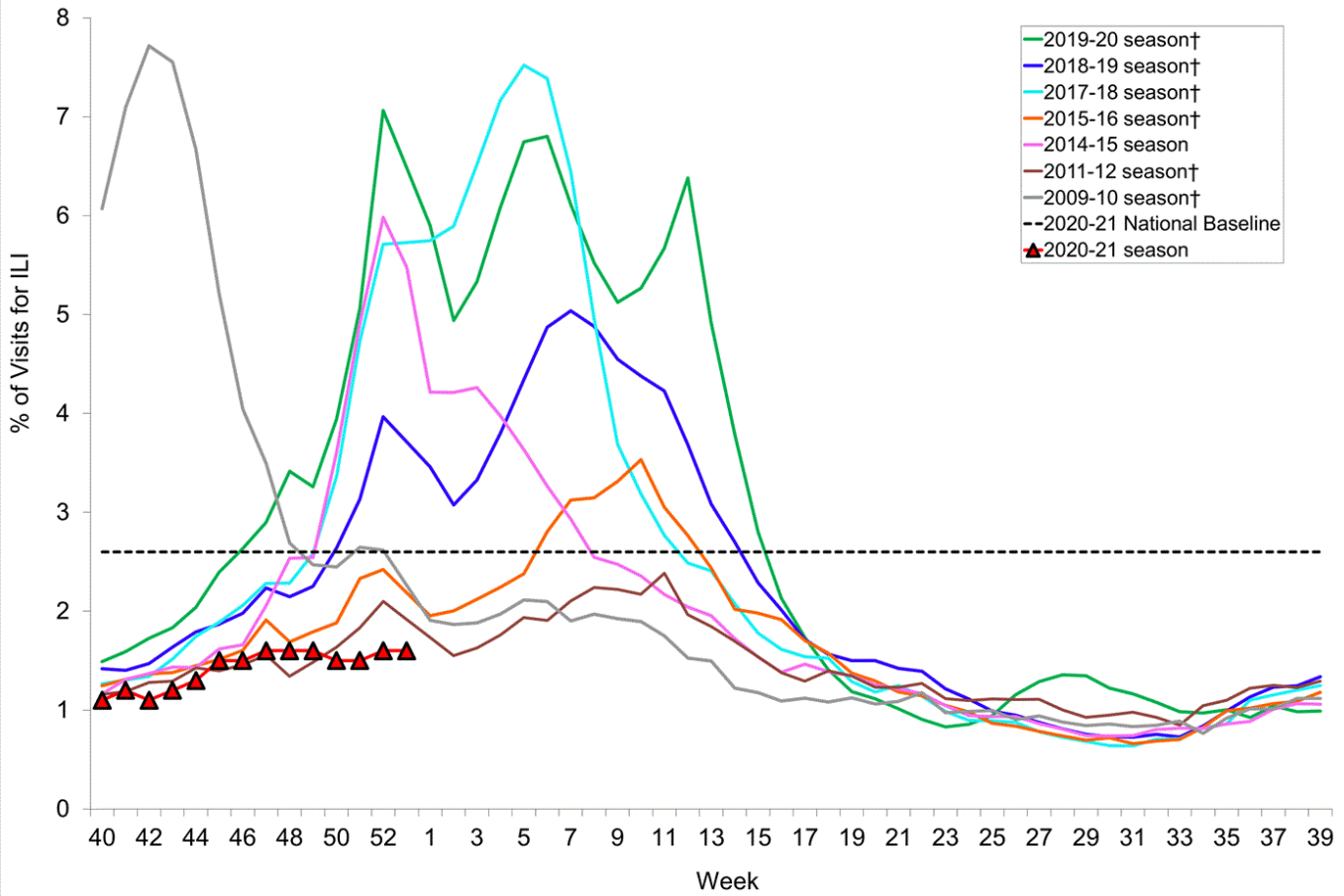


U.S. Army Public Health Center

# Army Influenza Activity Report

Week ending 02 January 2021 (week 53)

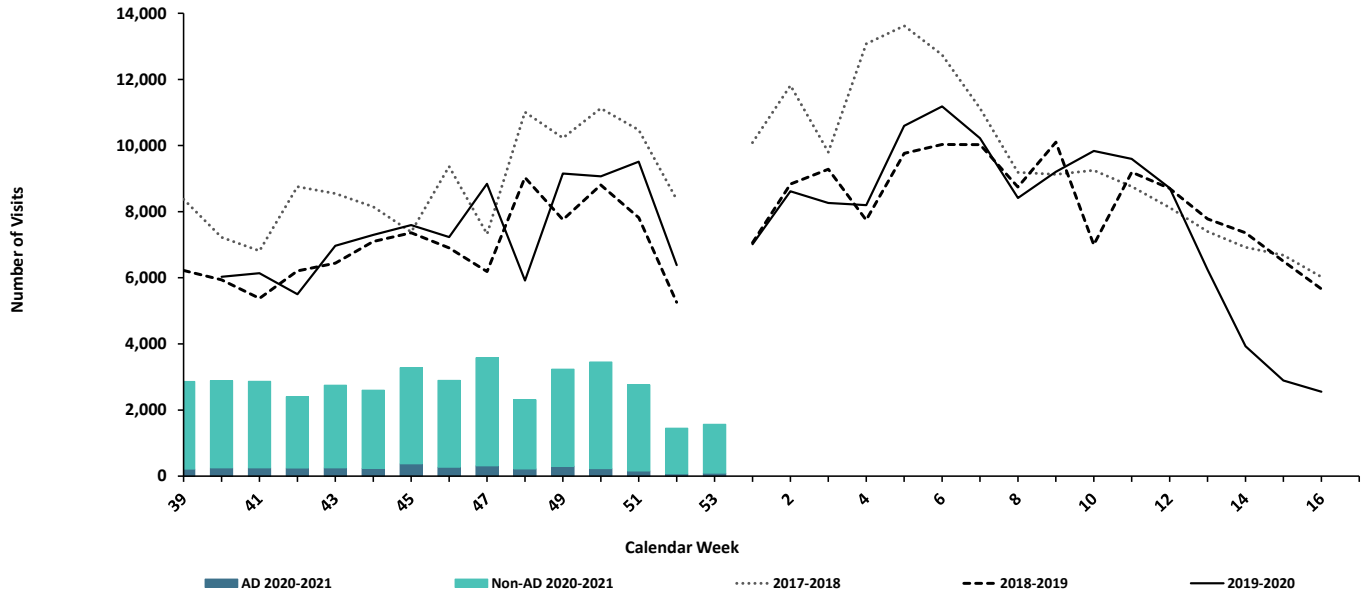
Percentage of Visits for Influenza-like Illness (ILI) Reported by the U.S. Outpatient Influenza-like Illness Surveillance Network (ILINet), Weekly National Summary, 2020-2021 and Selected Previous Seasons



†These seasons did not have a week 53, so the week 53 value is an average of week 52 and week 1.



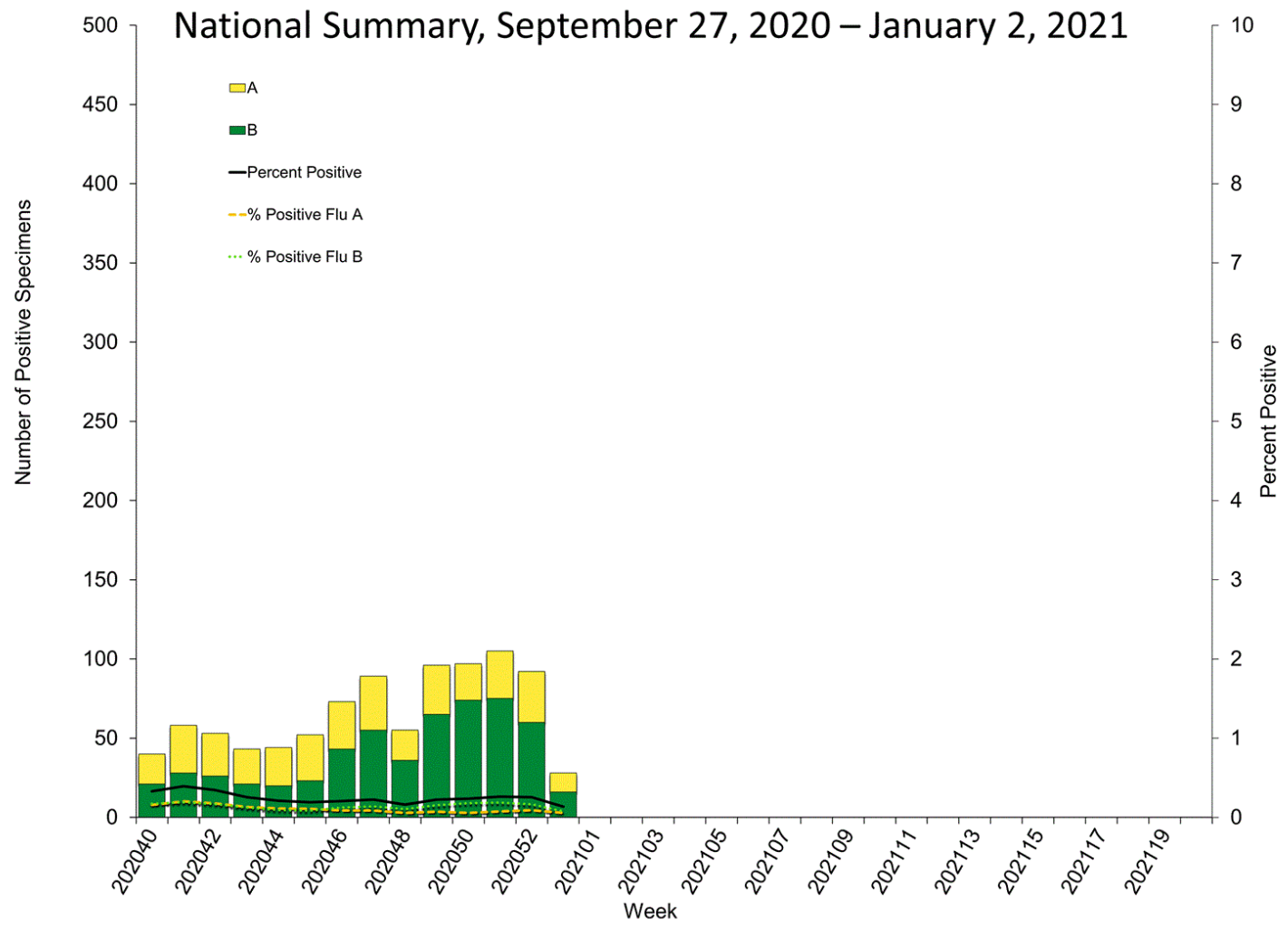
**ESSENCE Weekly Outpatient Clinic Visits for Influenza-like Illness**  
*Army MTFs, All Services, 2017-2021*



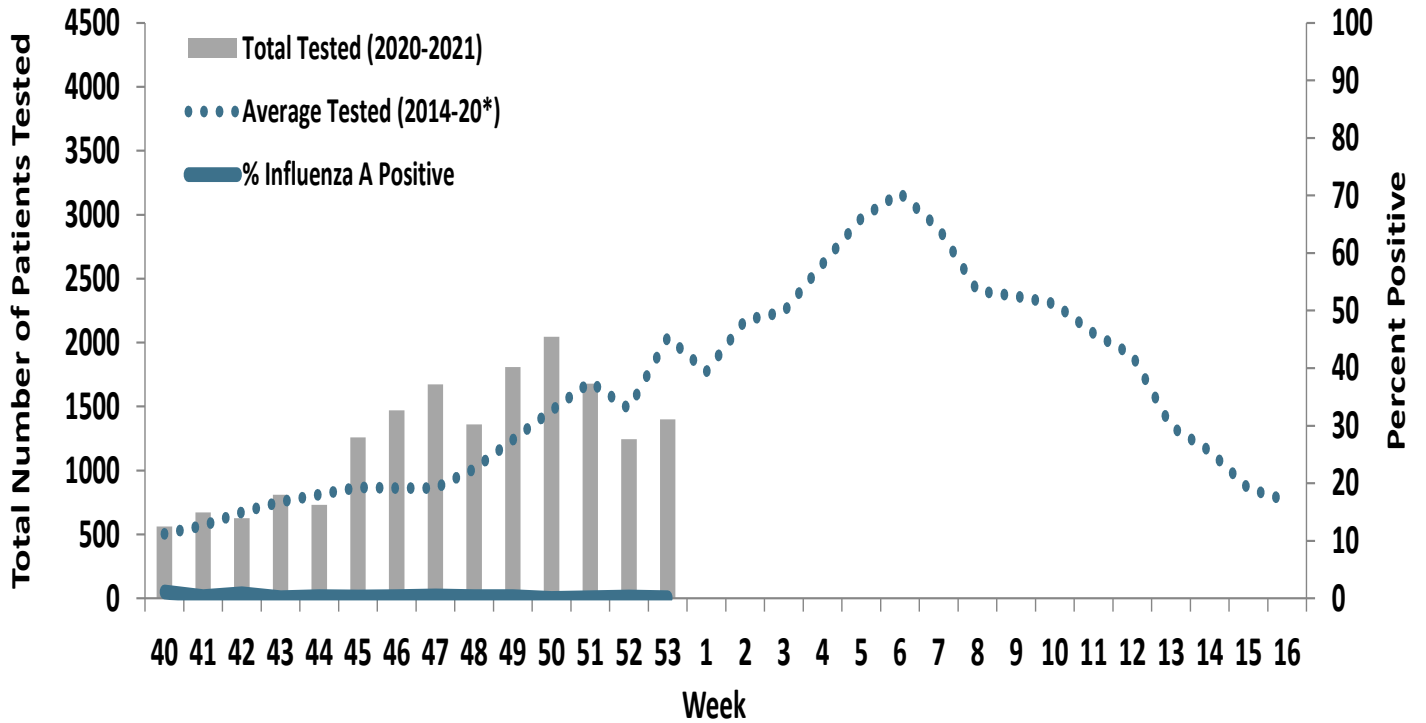




## Influenza Positive Tests Reported to CDC by U.S. Clinical Laboratories, National Summary, September 27, 2020 – January 2, 2021



**Proportion of Positive Influenza A Specimens for U.S. Army 2020-2021**



\*2014/2015 influenza season - 2019/2020 influenza season